



Board of Directors Meeting

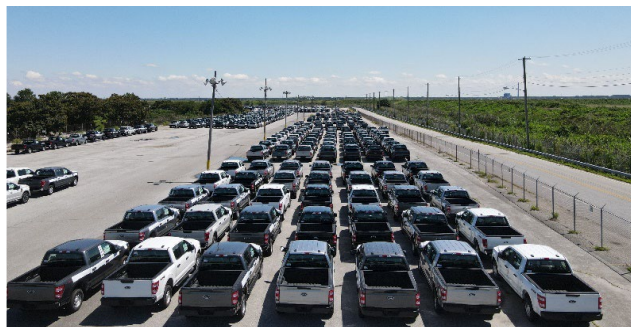
December 11, 2025

DSPC Updates

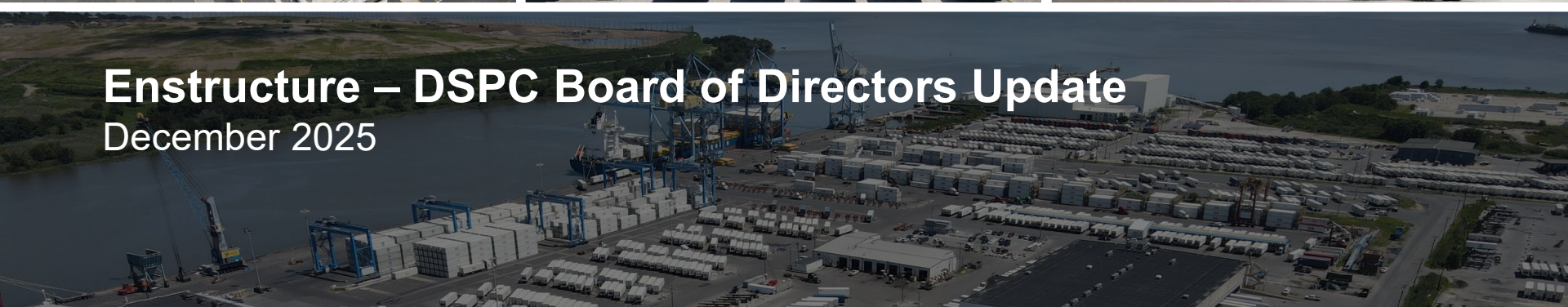
Enstructure/Port of Wilmington Update



ENSTRUCTURE



Enstructure – DSPC Board of Directors Update
December 2025



Agenda

- 1 Port Wilmington Operations Update
- 2 Delaware Container Terminal Project Update
- 3 Community Engagement

Port Wilmington | Commercial Updates

Kickstarted 2025-2026 fruit season while continuing strong performance across segments

Fruit Season

- Received first Moroccan clementine vessels in early November, with Chilean grape vessels are scheduled to begin arriving in January
- ~\$1.5M Enstructure investment in warehouses and equipment to optimize cold storage and fumigation capacity ahead of peak fruit season

Breakbulk & Warehouse Operations

- Secured two additional off-site warehouse leases to expand storage capacity to support increased breakbulk activity in Port Wilmington

RoRo Business

- Advanced Personally-Owned Vehicle export business to West Africa

Tariff and Trade Impact

- Continuing to monitor tariff and trade impacts → steady volume projected across key Port Wilmington commodities

Port Wilmington | Operations Update

YTD comparison vs FY24 (November 2025)

**Vessel
tonnage**

Container & Bulk tonnage in line with FY24
+468% Breakbulk tonnage¹

**Labor
hours**

+21% Overall labor hours

Port Wilmington has seen a 30% increase in labor wages YTD

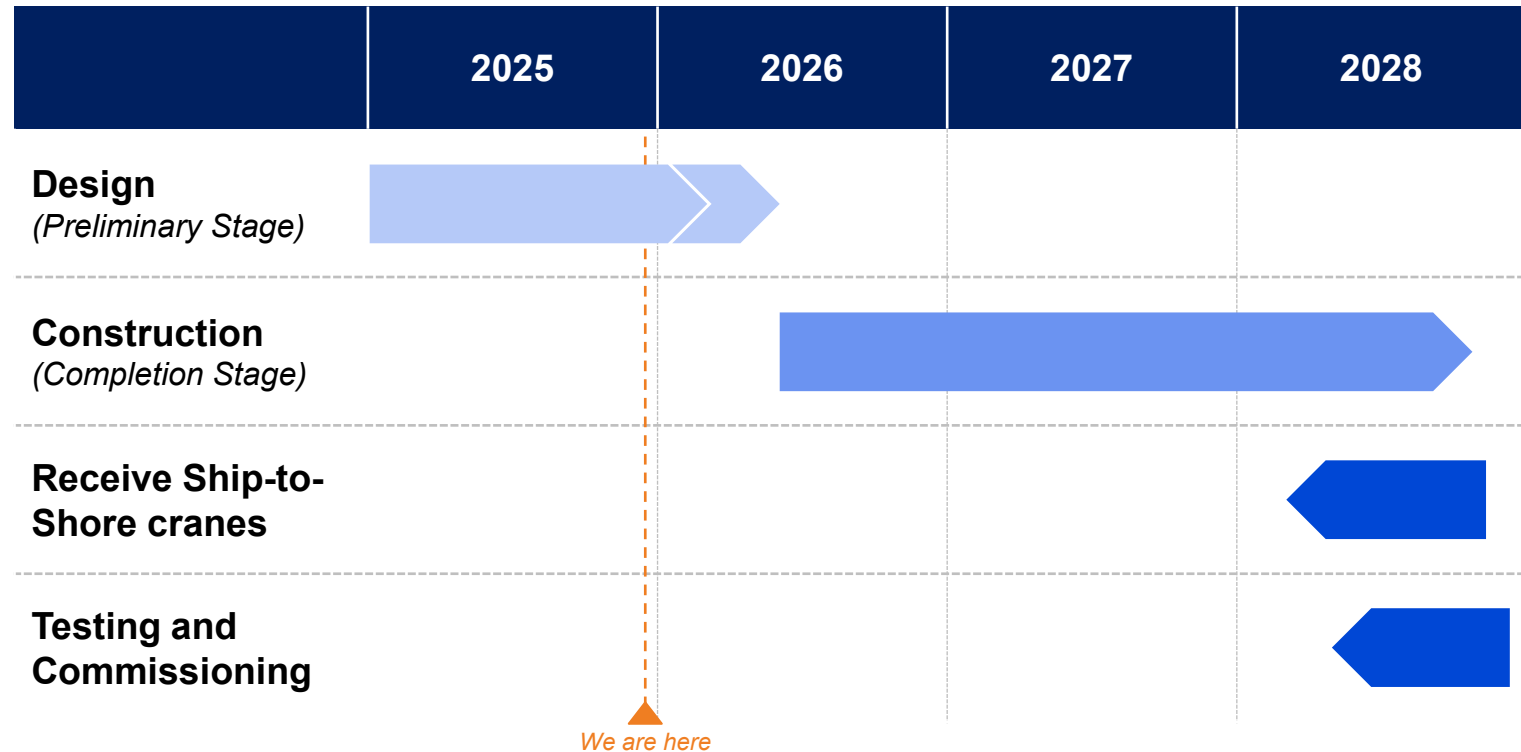
Port Wilmington | Chiquita Vessel Fire

- On Wednesday, November 26, a **fire was triggered onboard Chiquita Voyager** docked at Port Wilmington due to a vessel generator malfunction
 - No injuries to Port Wilmington (ILA, Enstructure) employees
 - Two vessel crew members sustained non-life-threatening injuries
- Thanks to quick action by vessel crew and first responders, the fire was **quickly extinguished**
- Enstructure safety, operations and management team **collaborated with U.S. Coast Guard and Wilmington Fire Department to ensure safe berth operations** during the issue resolution period
- Stevedoring and container yard **operations resumed back to normal** during first week of December

Edgemoor Expansion Update

Delaware Container Terminal | Project Update

Progressive design-build & equipment commissioning schedule for Phase I



Key updates in Preliminary Stage design

- Site investigations near final
- 30% design finalized → 60% design milestone Q1 2026
- Ongoing permit issuance consideration by US Army Corp Engineers

Community Engagement | Delaware Container Terminal Town Hall

- Town Hall held on Wednesday, November 19, at Mt. Pleasant Elementary
- Hosted in partnership with DSPC and moderated by Councilman John Cartier
- More than 100 attendees received updates and had their questions answered:
 - Project details & timeline
 - Traffic & noise conditions
 - Environmental concerns
- Feedback is received and appreciated at port.delaware.gov



DSPC and Enstructure delivered DCT project updates and reinforced commitment to transparency, community input, and environmental stewardship

Community Engagement | Thanksgiving Turkey Donation



Enstructure and the ILA worked together to donate 500 turkeys to local community centers for Thanksgiving

Thank you

Public Comment