



# **Board of Directors Meeting**

**February 2, 2026**

# **DSPC Updates**

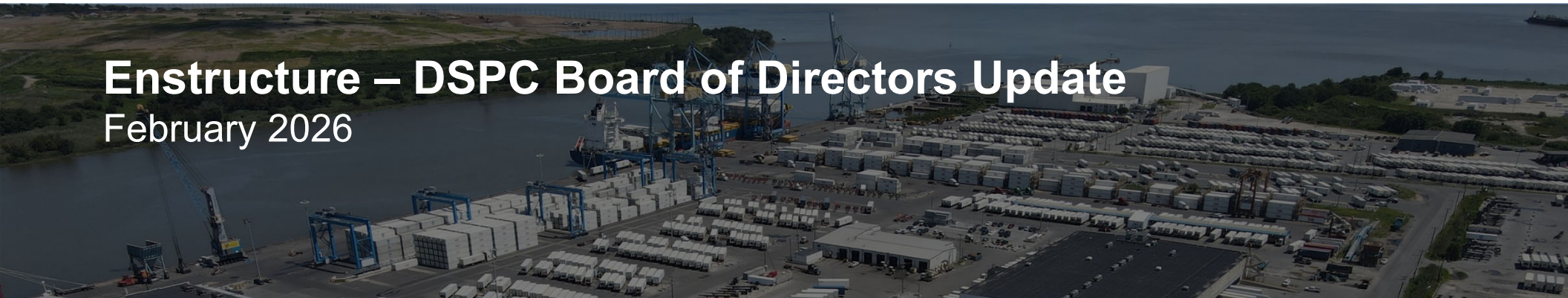
# **Enstructure/Port of Wilmington Update**



# ENSTRUCTURE



## Enstructure – DSPC Board of Directors Update February 2026



---

## Agenda

- 1 Port Wilmington Operations Update
- 2 Delaware Container Terminal Project Update
- 3 Leadership Update

## Port Wilmington | Commercial Updates

---

*Delivering uninterrupted fruit season operations while supporting regional winter preparedness*

### **Fruit Season**

---

- Strong volumes in ongoing Moroccan clementine season → handling cargo for US and Canadian customers through mid-April
- Chilean fruit season began in Wilmington on the week of January 27<sup>th</sup>, including successful fumigations → working in cooperation with ILA and local service providers to support high anticipated cargo volumes
  - *Delaware Highlight:* partnered with Agile Cold Storage to utilize Claymont, DE facility for storage of certain fruit cargoes

### **Rock Salt Sales**

---

- Handled heavy salt volumes through the port during last weeks of 2025 in preparation for winter season → supports local businesses and public entities in region during snowfall events

# Port Wilmington | Operations Update

## FY25 vs FY24

**Vessel  
tonnage**

*Container & Bulk tonnage in line with FY24*  
**+411%** Breakbulk tonnage<sup>1</sup>

**Labor  
hours**

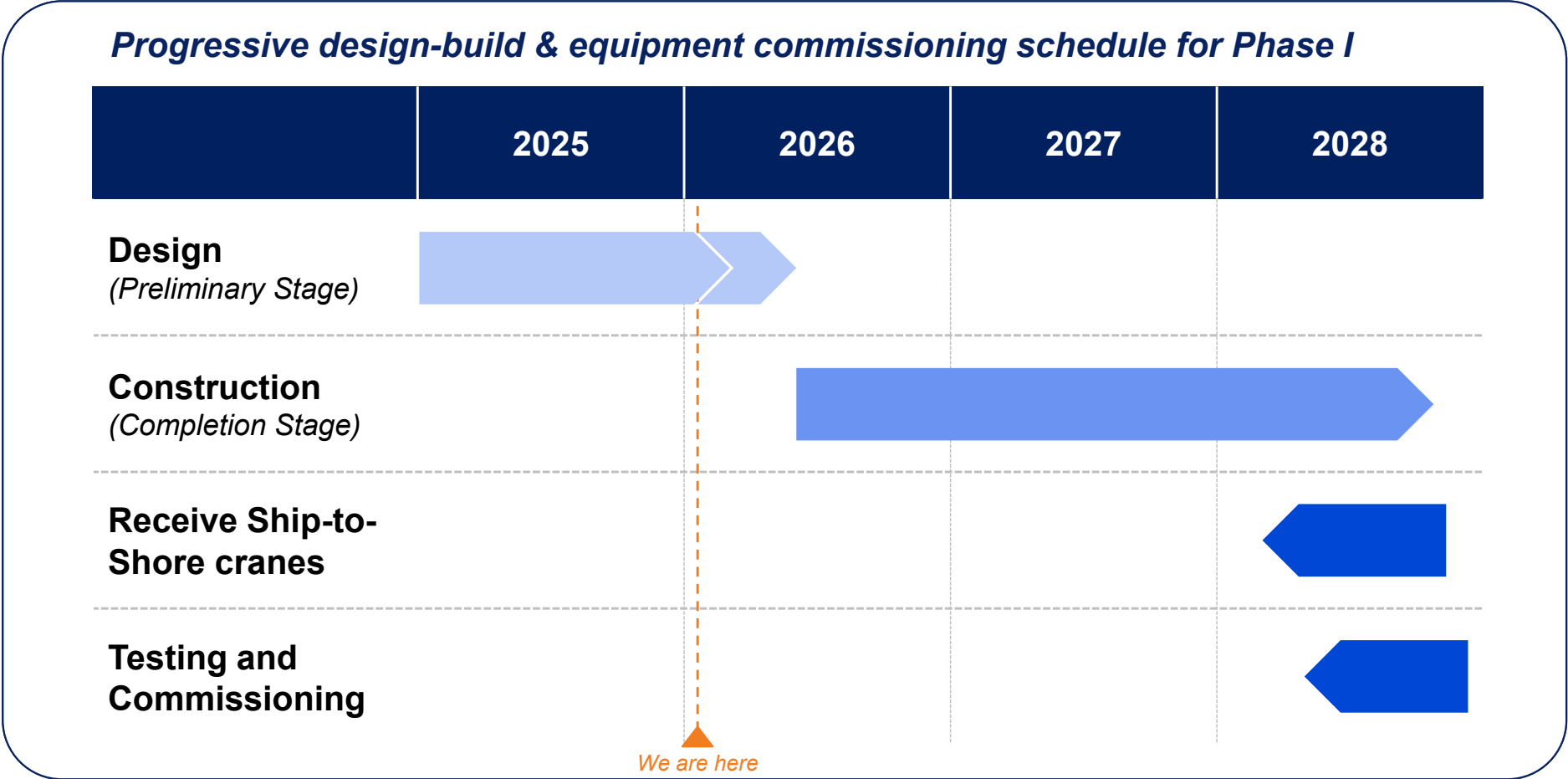
**+22%** Overall labor hours

**Port Wilmington has seen a 31% increase in labor wages since December 2024**

1. Adjusted to exclude cargo deviated to Port Wilmington due to Baltimore tragedy in March 2024  
Source: Management analysis

# Edgemoor Expansion Update

# Delaware Container Terminal | Project Update



Key updates in Preliminary Stage design

- Ongoing coordination with DeIDOT and DNREC through design & approvals process
- Site investigations and marine / uplands soil characterization finalized
- 60% design finalized → next milestone cost proposal from EPC contractor
- Ongoing permit issuance consideration by US Army Corp Engineers

## Leadership Update

### Enstructure is proud to welcome Eryn Dinyovszky as President of Enstructure Mid-Atlantic

- Eryn will start April 2026
- Has three decades of maritime industry experience.
  - ▶ Most current: CEO of the Nordic region for Yilport Holding Inc.
  - ▶ Previous: Sailed as a cadet, various operations roles in the U.S. and Middle East
- Will oversee operations and commercial activities across Delaware facilities, including the development of new Delaware Container Terminal



*“I’m thrilled to return to the U.S. and look forward to leading Enstructure Mid-Atlantic in delivering best-in-class services. The existing infrastructure in Wilmington, DE and Fairless Hills, PA, is essential to supporting the economic well-being of regional businesses, employees and communities. In addition, the development of Delaware Container Terminal presents an exciting growth opportunity for Enstructure and the State of Delaware. I’m excited to work closely with the Enstructure team, the ILA and the Building Trades to continue our regional expansion.” – Dinyovszky*

---

**Thank you**

# Public Comment