



Board of Directors Meeting

June 15, 2026

DSPC Updates

Executive Director's Report

- **Port Environmental Compliance Progress**
- **External Engagement**
- **Delaware Container Terminal Development**
- **Grant Updates**

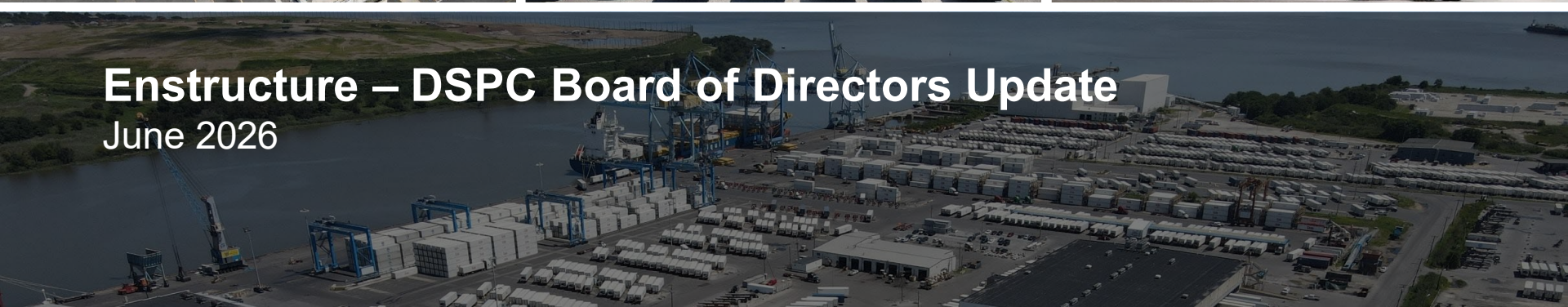
Enstructure/Port of Wilmington Update



The logo for ENSTRUCTURE, featuring a stylized blue and orange graphic element to the left of the word "ENSTRUCTURE" in a bold, blue, sans-serif font.



Enstructure – DSPC Board of Directors Update
June 2026



Agenda

1. Port Wilmington General Update
2. Delaware Container Terminal Project Update
3. Community Update

Port Wilmington | General Updates

Major improvement in productivity trends

- Chiquita Explorer 73 had best productivity all year
- Driving factor is reduction in STS crane downtime

Strategic investments in equipment and infrastructure

- Two Mobile Harbor Cranes and additional equipment arrived at Port Wilmington (multi-million-dollar equipment investment)
- Crane C1 has been moved to auto berth to support expanded operations
- Equipment will improve flexibility and reliability across port operations → support efficient and consistent service for our customers and the broader community

Plug expansion project to be completed by June 24th

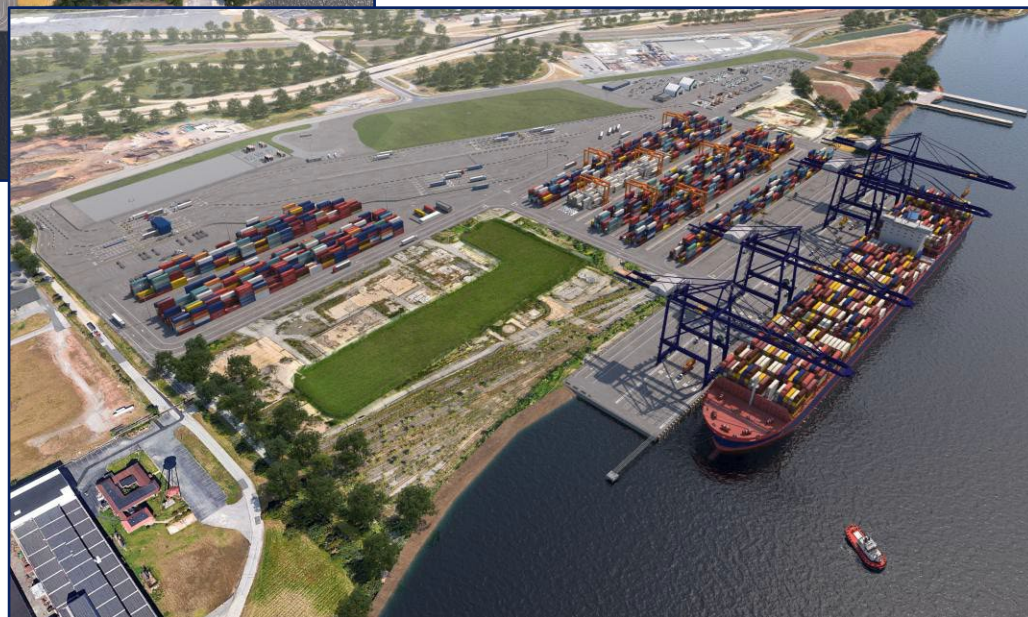
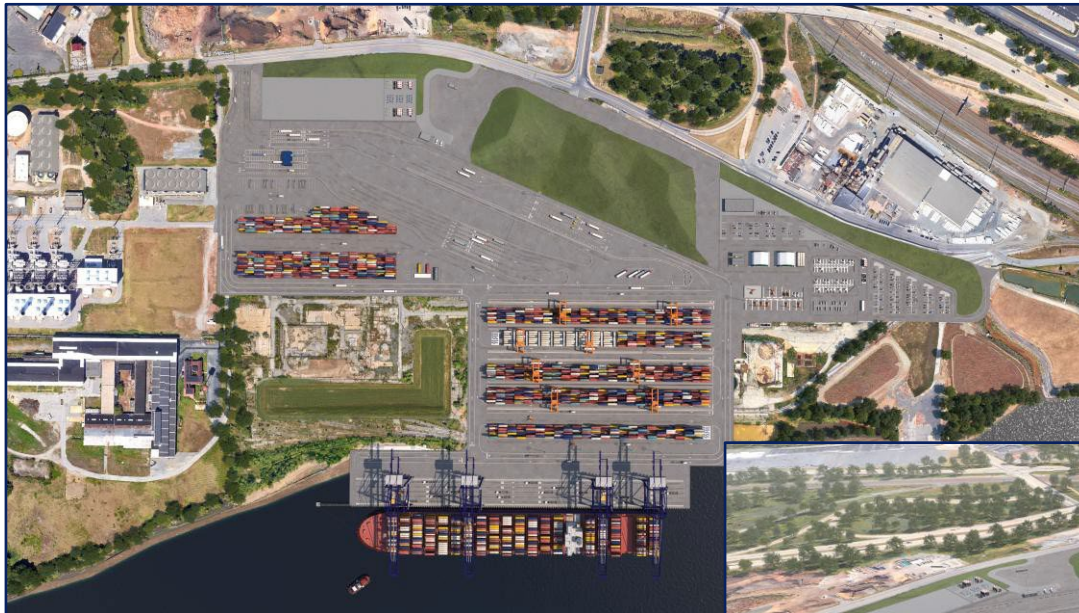


Figures 1 & 2: New Mobile Harbor Cranes being discharged at Port Wilmington

Delaware Container Terminal Update

DCT | Project Update

DCT Overview Renderings

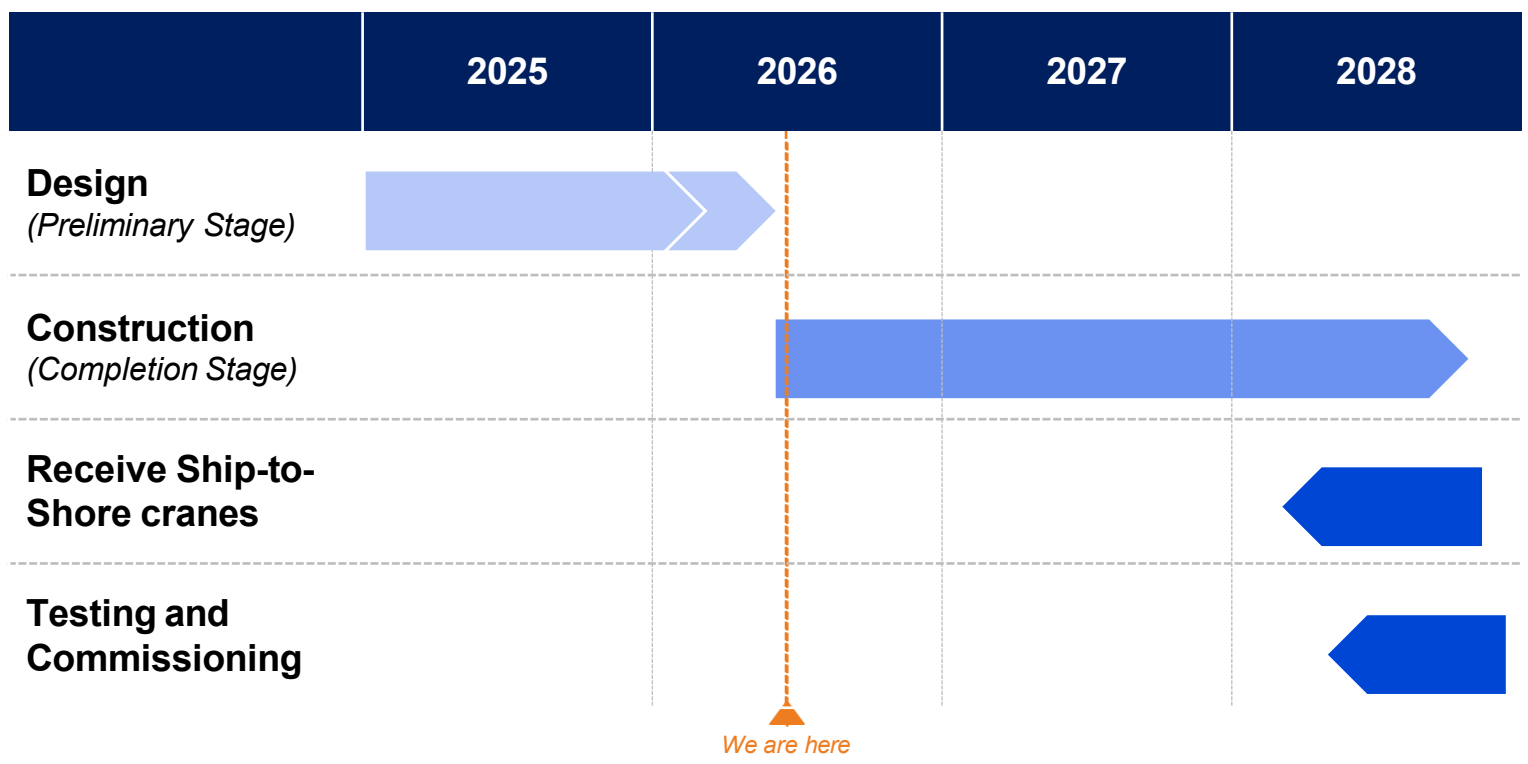


Figures 3 & 4: Top-down view and south view

Note: Renders are illustrative and may vary as project progresses

DCT | Project Update

Progressive design-build & equipment commissioning schedule for Phase I



Key updates

- Finalized Preliminary Stage design phase and moved into construction as of June 1st → in line with previously communicated timeline
- Initiated removal and demolition activities at Edgemoor
- Planned construction start summer 2026

Community Update

■ June Information Session & Tour

- ▶ **Date:** Saturday, June 20, 2026

- ▶ **Tour Times:**
 - 9:00 a.m. – *2 spots remaining!*
 - 10:00 a.m. – *3 spots remaining!*

- ▶ **Meeting Location:** Brandywine Hundred Fire Hall

- ▶ **Registration Deadline:** Monday, June 15, 2026

- ▶ **Additional Details:** Representatives from the Edgemoor Port Terminal Truck Routing Feasibility Study will be available to answer questions and provide information about traffic planning.

- ▶ **Register Here:**
<https://form.jotform.com/261053891120146>



Email MidAtlanticComments@enstructure.com for more information

Thank you

Resolutions

Resolution 26-06: Authorization of Tolling Agreement

Public Comment